

DATA ENGINEER/ANALYST

JOB DESCRIPTION

JOB TITLE:	Data Engineer/Analyst
LOCATION:	HQ, 39 Fleet Street Liverpool L1 4AR
ANNUAL SALARY:	Competitive

ROLE RESPONSIBILITIES

We are on our way to achieving our mission of becoming a data-driven business, and we are looking for someone to take the lead on progressing this. This opportunity gives you the chance to shape the course of the company through democratising data throughout the business and analysing new trends. This role will be fully responsible for all data within the business, from managing data sources and datasets through to providing dashboards and analysis to end-users.

Background

We have a CRM system that can be used to generate insight into our customer behaviour, the operational use of our sites, and the marketing campaigns we run. You will be working with data from our own CRM (Rock Gym Pro), Google Analytics, and Salesforce.

What you will do

- Maintain a robust and reliable data platform that collects, transforms, and organises data from multiple internal and external data sources
- Build required infrastructure for optimal extraction, transformation and loading of data from various data sources using SQL technologies
- Democratise data access for all teams (particularly marketing and operations) and ensure it is provided in an easy-to-use format (e.g. dashboards) so they can self-serve basic requests
- Work with key cross-functional stakeholders to identify data needs and opportunities to drive value, and work with these teams to bring these to life
- Identifying, designing and implementing internal process improvements including re-designing infrastructure for greater scalability, optimizing data delivery, and automating manual processes
- Building analytical tools to utilize the data pipeline, providing actionable insight into key business performance metrics including operational efficiency and customer acquisition
- Managing the SQL Server instance and ensuring appropriate access to data in a timely fashion, you will be responsible for the ELT pipelines used to generate KPIs and reports.

PERSONAL PROFILE

- Ability to interrogate data to find trends and interesting patterns
- Self-motivated and pro-active with good analytical problem solving
- Strong interpersonal/business partnering skills
- Great written and oral communication skills
- Statistical and mathematical knowledge

REQUIRED EXPERIENCE, KNOWLEDGE AND SKILLS

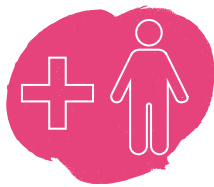
- SQL Server
- Advanced SQL
- Advanced Excel
- Business Partnering
- Use of MS Office tools, sharepoint, teams.

DESIRABLE EXPERIENCE, KNOWLEDGE AND SKILLS

- Google Analytics
- Salesforce
- Rock Gym Pro
- PowerBI/Tableau
- Grafana
- Git
- Liquibase and DB Versioning
- DBT
- Python
- Data analysis in leisure industry or multi-site business
- Understanding of demographics and geospatial data

WHATS IN IT FOR YOU?

In return for your brilliance, you will receive:



Free Climbing for you and a plus one



flexible/hybrid working



Pet friendly working environment



A daily right old laugh with your team



Competitive salary



Training, learning and development opportunities



33 days annual leave per year
(Pro-rata & inclusive of bank holidays)

OUR VALUES

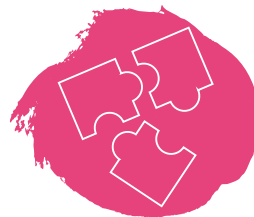
We believe that life is a series of adventures, that it's easier to get better together, that we should strive to deliver the unexpected... and we believe that applies as much to the service we provide to our customers as it does to the way we run our business and work with our teams. We're a close-knit team and looking for a new team member that will quickly feel part of the family. We value people that are:



Humble



Patient and willing to learn



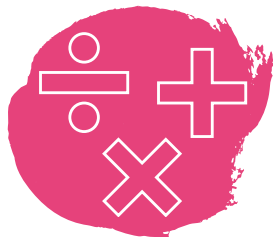
Curious and find joy in solving problems



Keen to learn and add value by advising upwards



Results orientated and able to prioritise



Calculated risk takers with a dash of audacious energy



Have an inherent understanding of people and how to bring the best out in them



Serious about fun and making the world better through delivering positive micro moments

It's important to the business that our members feel part of a community and that spirit of inclusiveness begins with our team. Let's be totally clear, if you don't think being inclusive is the enlightened path, you won't like working here. Please apply elsewhere.

TO APPLY...

please send your CV and a covering letter to recruitment@theclimbinghangar.com

Don't forget to let us know in your covering letter why you want to work for The Climbing Hangar; what position you'd like to apply for; and why you think you'd be a great fit for the role and our vision.